

LADIES BIKER LEATHER JACKET - SIZE GUIDE

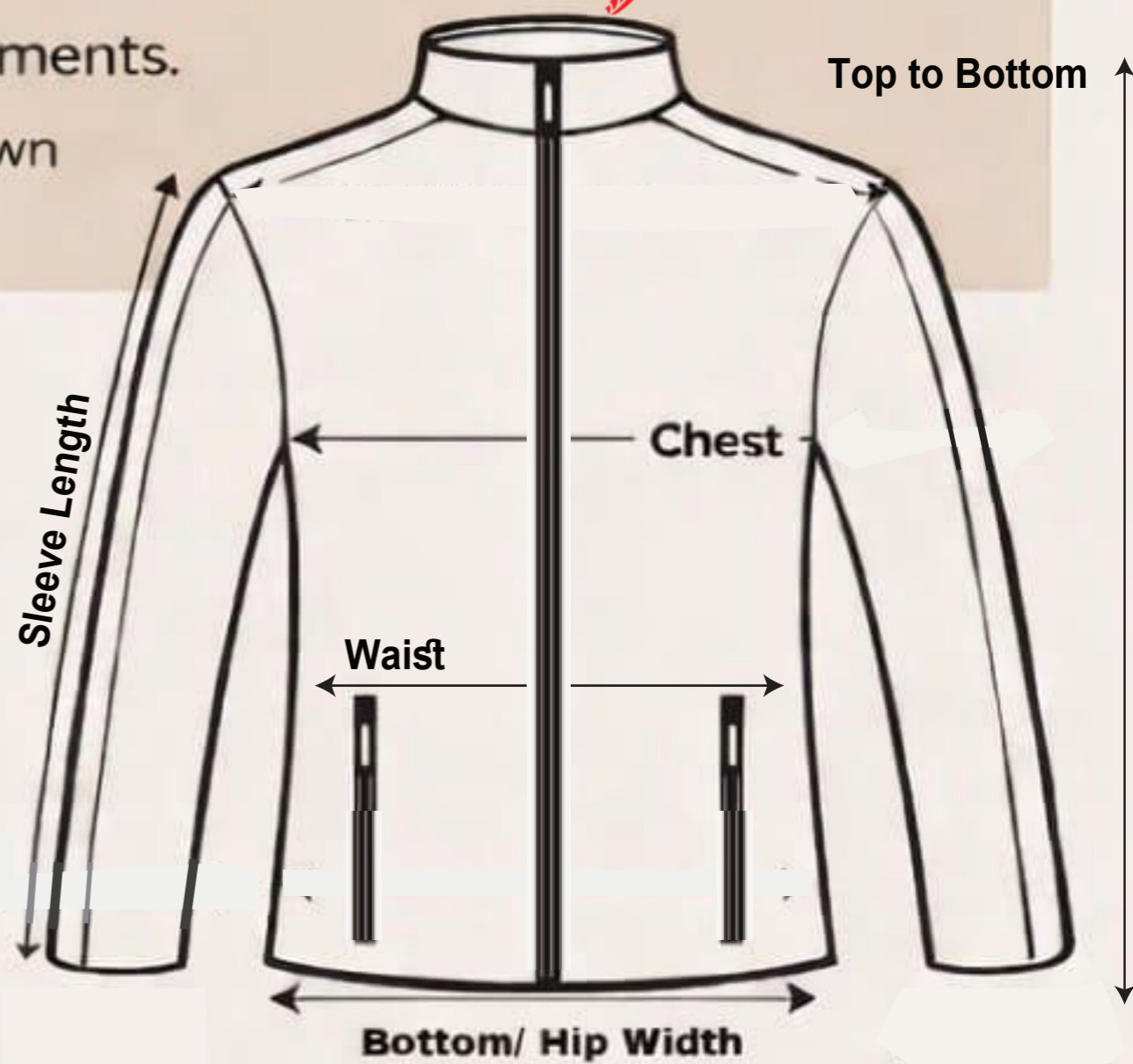
BLAZEN PIRIT

Important: All measurements are jacket measurements, not body measurements.

For best fit, measure a jacket you already own and compare it with the chart.

HOW TO MEASURE

- Chest:** Measure **around** the jacket at the fullest part of the chest, underarm to underarm, circumference.
- Sleeve Length:** Measure from shoulder seam to end of wrist cuff.
- Waist:** Measure around the jacket at the natural waist.
- Bottom / Hips:** Measure around the bottom hem of the jacket (Important for riding comfort)



*Note: This style shown doesn't visually represent all jackets we offer.

JACKET SIZE CHART (INCHES)

OUR Size	Chest	Length TOP to bottom	LS sleeve length Shoulder to wrist	Waist size	Width at bottom of jacket/hips
XXS	31	23	23	24	31.5
XS	33	24	23	26	33
S	36	24	23	28	36
M	39	25.5	23	30.5	39
L	41	25.5	23.5	33.5	42
XL	43	25.5	23.5	35.5	44
2X	46	26	23.5	38	46
3X	49	27	24	42	50
4X	53	27.5	24	46	54
5X	57	28	24.5	50	58
6X	61	28	24.5	56	62

• **Note:** This style shown doesn't visually represent all jackets we offer.

FEMALE RIDER FIT NOTES (VERY IMPORTANT)

- This is a ladies-specific **biker fit**, shaped through the waist and hips.
- Designed to sit comfortably **while riding**, with correct sleeve length in riding position.
- If you plan to wear **hoodies** or layers underneath, we **recommeneed sizing up**.
- For broader hips or a **relaxed fit** at the bottom, choose a size based on **bottom/width**, not chest.
- Leather is a **natural material** and may feel snug at first, it will **soften** and mold to your body with wear.

SIZING TIP: If you are between **two sizes**, choose the **larger size** for comfort and riding flexibility while riding.